

**Pièces de rechange**  
**Kit Cartouche MARZZO D38**  
**44020-E-005**



***BOS Suspension***

*4 Impasse Léonce Couture*

*ZA du Mont Blanc*

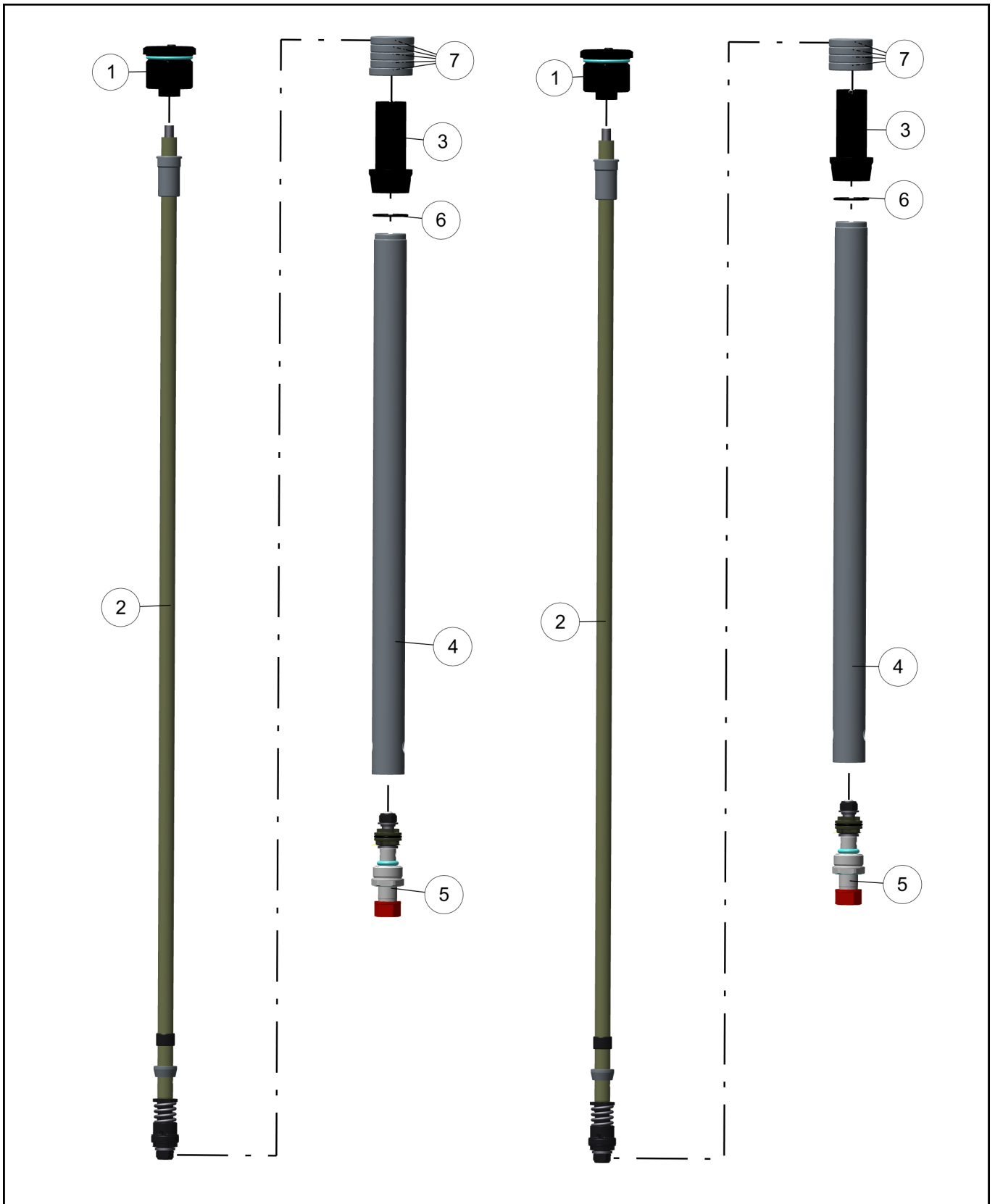
*31200 Toulouse - France*

*Mel : [sales@bos-suspension.com](mailto:sales@bos-suspension.com)*

*Tel : +33(0)5 34 25 33 66*



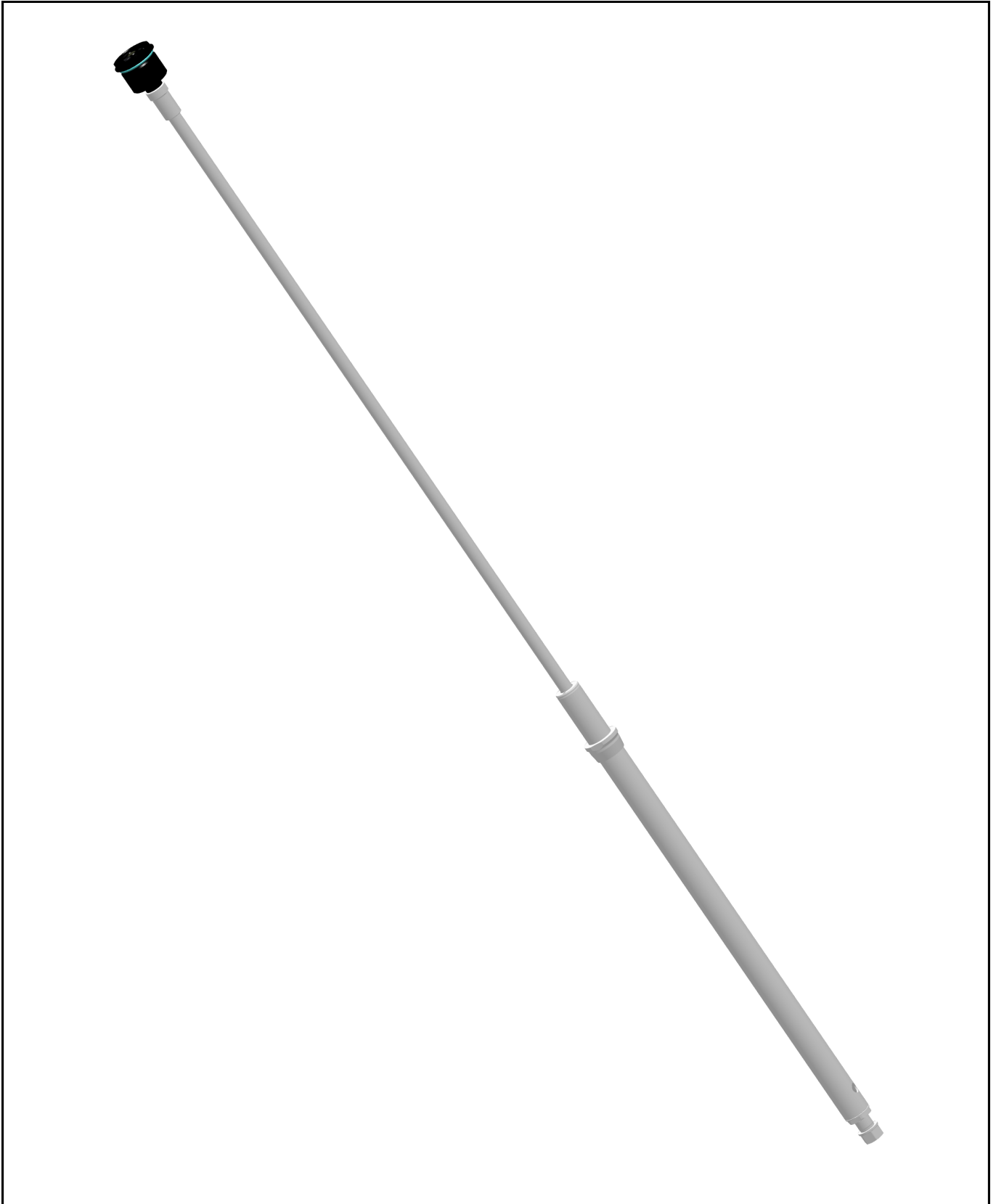
**ECLATÉ GÉNÉRAL**



**NOMENCLATURE****029-SE-025 x2**

REP	NAME	TYPE	REF	IND	QTY
1	BOUCHON SUP MARZZO D38	ASSEMBLY	032-SE-017	-	1
2	TIGE H MARZZO	ASSEMBLY	015-SE-060	-	1
3	INTERFACE CARTOUCHE	PART	44020-D-022	-	1
4	TUBE CARTOUCHE	PART	44020-D-054	-	1
5	BLOC COMP MARZZO D38	ASSEMBLY	002-SE-043	-	1
6	JOINT TORIQUE 20X1.5	PART	JT200002A3	-	1
7	CALE APPUI SUP RESSORT	PART	44020-D-055	-	1
8	CALE RESSORT MARZZO	PART	44020-D-056	-	7

**SE N°1 : 032-SE-017\_BOUCHON-SUP-MARZZO**



**NOMENCLATURE**

REP	NAME	TYPE	REF	IND	QTY
1	BOUCHON H D38	PART	44020-D-053	-	1
2	VIS DETENTE	PART	150707-D-021	B	1
3	JOINT TORIQUE 4.47X1.78	PART	JT044703A3	-	1
4	VIS CHC M3X6 INOX	PART	VVCHC0306A0	-	1
5	JOINT TORIQUE 3X1.2	PART	JT030019A3	-	1
6	BILLE D2.5	PART	B25A	-	2
7	JOINT TORIQUE 8X3 VI	PART	JT080007B5	-	1
8	JOINT TORIQUE 30X2	PART	JT300004A3	-	1

**SE N°2 : 015-SE-060\_TIGE-H-MARZZO**



## NOMENCLATURE

REP	NAME	TYPE	REF	IND	QTY
1	GT CARTOUCHE MARZZO80	PART	44020-D-061	-	1
2	BAGUE PAP-1008-P10 OU P14	PART	GT01A10A	-	1
3	RESSORT HV K=6	PART	151108-D-075	-	1
4	APPUJ RESSORT DET	PART	44020-D-011	-	1
5	TIGE MARZZO	PART	44020-D-018	-	1
6	PORTE PISTON CONE-VALVE	PART	150707-D-175	A	1
7	ECROU TIGE M10X0.75	PART	43618-D-100	-	1
8	POINTEAU DET	PART	151108-D-082	-	1
9	TRANSMISSION DETENTE ALU 599.5MM	PART	150013D201/599.5		1
10	JOINT TORIQUE 4X1.5	PART	JT040002A3	-	1
11	PISTON D18 CONE VALVE	PART	150707-D-173	-	1
12	SETTING	PART	-	.	1
13	TOP PLATE 13X1.5	PART	230104-D-040	B	1
14	ECROU NYLSTOP M6	PART	VEN06A0	-	1
15	GUIDAGE PISTON DET 18	PART	150707-D-041	-	1
16	RESSORT	PART	RA1256670A	-	1
17	VALVE CONIQUE 7 °	PART	150707D174/1	-	1
18	RESSORT HV K=4	PART	91707-D-004	A	1
19	JONC	PART	091305-D-010	A	1
20	JOINT TORIQUE 10X1.5	PART	JT100002A3	-	1

**SE N°3 : 002-SE-043\_BLOC-COMP-MARZZO-D38**





**NOMENCLATURE**

REP	NAME	TYPE	REF	IND	QTY
1	CORPS COMP	PART	44020-D-019	-	1
2	POINTO COMP	PART	44020-D-023	-	1
3	BILLE D2.5	PART	B25A	-	2
4	JOINT TORIQUE 8X3 VI	PART	JT080007B5	-	1
5	JOINT TORIQUE 3.5X1.5	PART	JT035002A3	-	1
6	TOP PLATE 13X1.5	PART	230104-D-040	B	1
7	SETTING	PART	-	.	1
8	PISTON COMPRESSION 18 FRITTÉ	PART	151613-D-042	-	1
9	GUIDE CLAPET REAL	PART	150707-D-023	A	1
10	JOINT TORIQUE 15X1.5	PART	JT150002A3	-	2
11	ECROU NYLSTOP M6	PART	VEN06A0	-	1
12	ECROU INF	PART	44020-D-024	-	1
13	RESSORT REAL EVO	PART	151613-D-039	-	1
14	BAGUE BS	PART	JP127180150J	-	1





**[www.bos-suspension.com](http://www.bos-suspension.com)**

---



**4, Impasse Léonce Couture – F31200 TOULOUSE**

**/ +33(0)5 34 25 33 66**

**[sales@bos-suspension.com](mailto:sales@bos-suspension.com)**