

Pièces de Rechange
Kit Cartouche CR9I
44020-E-007



BOS Suspension

4 Impasse Léonce Couture

ZA du Mont Blanc

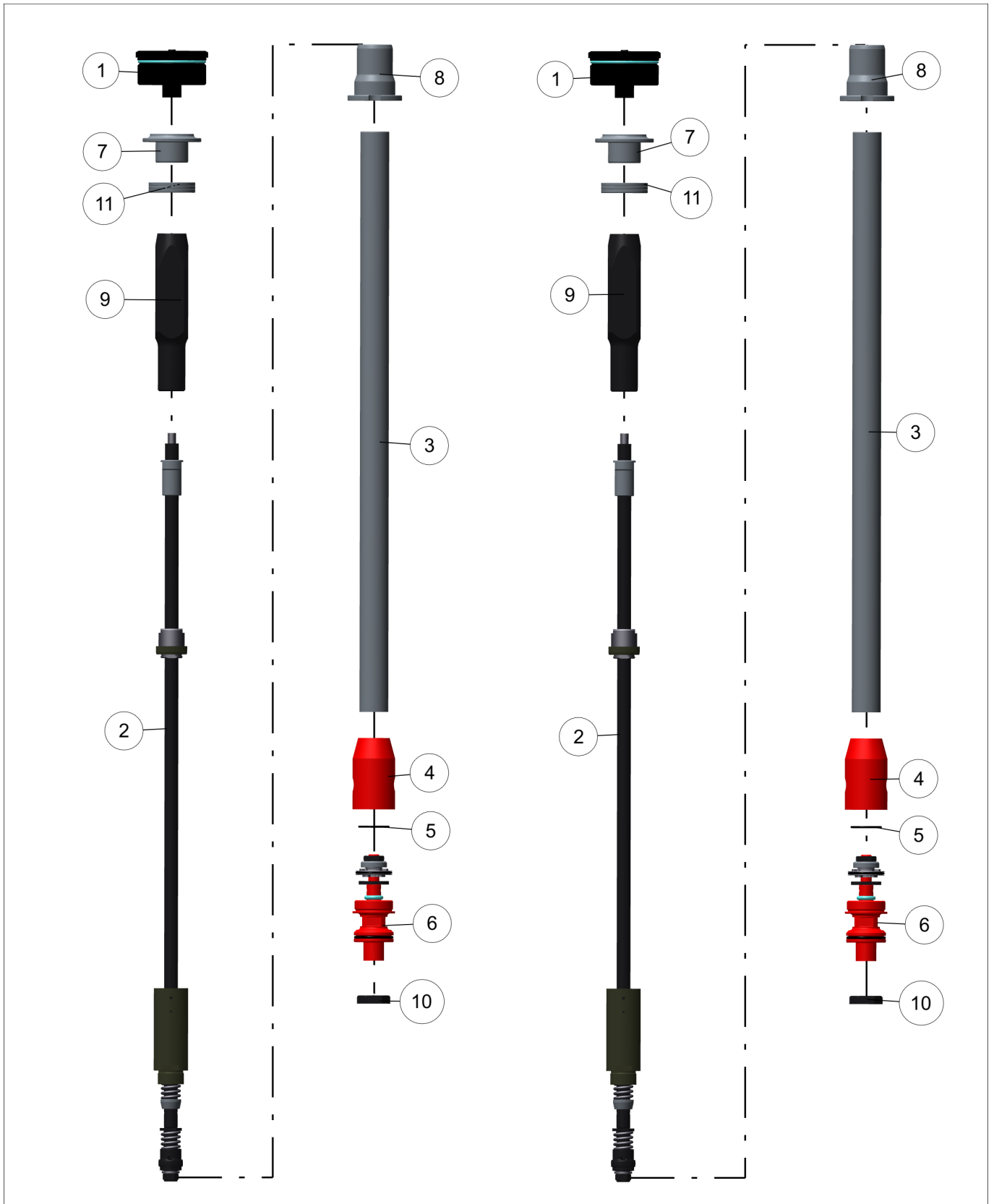
31200 Toulouse - France

Mel : sales@bos-suspension.com

Tel : +33(0)5 34 25 33 66



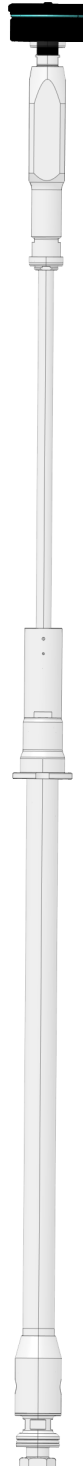
ECLATÉ GÉNÉRAL



NOMENCLATURE

REP	NAME	TYPE	REF	IND	QTY
1	BOUCHON SUP CR89	ASSEMBLY	032-SE-013	-	1
2	TIGE H SHW CR91	ASSEMBLY	015-SE-075	-	1
3	TUBE CARTOUCHE	PART	44020-D-013	-	1
4	INTERFACE CARTOUCHE	PART	44020-D-006	-	1
5	JOINT TORIQUE 20X1.5	PART	JT200002A3	-	1
6	BLOC COMP SHW CR91	ASSEMBLY	002-SE-045	-	1
7	CALE APPUI RESSORT	PART	44020-D-065	-	1
8	GUIDE RESSORT INF	PART	44020-D-066	-	1
9	GUIDE RESSORT	PART	44020-D-067	-	1
10	ECROU BAS M15X100	PART	91305-D-061	-	1
11	CALE PRECHARGE 2.5MM	PART	44020-D-069	-	3

SE N°1 : 032-SE-013_BOUCHON-SUP



NOMENCLATURE

REP	NAME	TYPE	REF	IND	QTY
1	BOUCHON H	PART	44020-D-009	-	1
2	VIS DETENTE	PART	150707-D-021	B	1
3	JOINT TORIQUE 4.47X1.78	PART	JT044703A3	-	1
4	VIS CHC M3X6 INOX	PART	VVCHC0306A0	-	1
5	JOINT TORIQUE 3X1.2	PART	JT030019A3	-	1
6	BILLE D2.5	PART	B25A	-	2
7	JOINT TORIQUE 8X3 VI	PART	JT080007B5	-	1
8	JOINT TORIQUE 46X2	PART	JT460004A3	-	1
9	CALE APPUI RESSORT	PART	44020-D-010	-	1

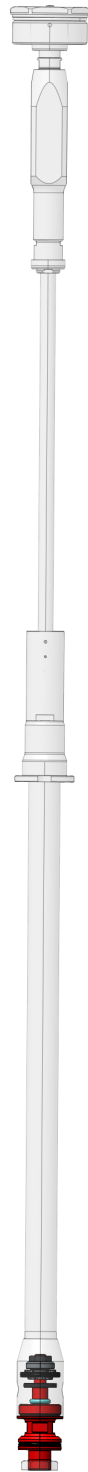
SE N°2 : 015-SE-075_TIGE-H-CR91



NOMENCLATURE

REP	NAME	TYPE	REF	IND	QTY
1	FUT DE BUTEE	PART	150707-D-125	C	1
2	BAGUE DE GUIDAGE	PART	GT01A10A	-	1
3	RONDELLE BUTEE	PART	150707-D-126	-	1
4	CLIPS TYPE 848 D16mm	PART	CTB16B	-	1
5	RESSORT HV K=6	PART	91707-D-005	A	1
6	APPUI RESSORT DET	PART	44020-D-011	-	1
7	TIGE CR91	PART	44020-D-064	-	1
8	PORTE PISTON CONE-VALVE	PART	150707-D-175	A	1
9	ECROU TIGE M10X0.75	PART	43618-D-100	-	1
10	POINTEAU DET	PART	151108-D-082	-	1
11	TRANSMISSION DETENTE ALU 481.5MM	PART	150015D013/481.5		1
12	JOINT TORIQUE 4X1.5	PART	JT040002A3	-	1
13	PISTON D18 CONE VALVE	PART	150707-D-173	-	1
14	SETTING	PART	-	.	1
15	TOP PLATE 13X1.5	PART	230104-D-040	B	1
16	ECROU NYLSTOP M6	PART	VEN06A0	-	1
17	GUIDAGE PISTON DET 18	PART	150707-D-041	-	1
18	RESSORT	PART	RA1256670A	-	1
19	VALVE CONIQUE 7 °	PART	150707D174/1	-	1
20	RESSORT HV K=4	PART	91707-D-004	A	1
21	JONC	PART	091305-D-010	A	1
22	JOINT TORIQUE 10X1.5	PART	JT100002A3	-	1
23	CORPS BUTEE	PART	150707-D-026	A	1
24	JONC	PART	91305-D-010	A	1
25	SUPPORT PISTON BUTEE	PART	150707-D-025	B	1
26	PISTON BUTEE	PART	150707-D-024	A	1

SE N°3 : 002-SE-045_BLOC-COMP-CR91



NOMENCLATURE

REP	NAME	TYPE	REF	IND	QTY
1	CORPS COMP SHW CR91	PART	44020-D-062	-	1
2	POINTO COMP	PART	44020-D-023	-	1
3	BILLE D2.5	PART	B25A	-	2
4	JOINT TORIQUE 8X3 VI	PART	JT080007B5	-	1
5	DOUILLE POINTO BLOC	PART	44020-D-068	-	1
6	JOINT TORIQUE 3.5X1.5	PART	150707-D-024	-	1
7	TOP PLATE ACIER 22MM	PART	150406-D-008	A	1
8	PISTON COMPRESSION	PART	151613-D-089	A	1
9	DOUILLE REAL	PART	151613-D-056	-	1
10	JOINT TORIQUE 24X1.5	PART	JT240002A3	-	1
11	COUPELLE REAL	PART	151613-D-055	-	1
12	ECROU BAS M8X1 INOX	PART	VEHM08A1	-	1
13	JOINT TORIQUE 25X2	PART	JT250004A3	-	1
14	CLIP TYPE VHM-8 INOX	PART	CTG08A		1
15	RESSORT REAL	PART	151613-D-070	-	1

NOTES

Lined area for notes, consisting of a large rectangular box with horizontal ruling lines.

www.bos-suspension.com



4, Impasse Léonce Couture – F31200 TOULOUSE

/ +33(0)5 34 25 33 66

sales@bos-suspension.com