



**Pièces de rechange**  
**Kit Cartouche YZ 1980**  
**44020-E-008**



***BOS Suspension***

*4 Impasse Léonce Couture*

*ZA du Mont Blanc*

*31200 Toulouse - France*

*Mel : [sales@bos-suspension.com](mailto:sales@bos-suspension.com)*

*Tel : +33(0)5 34 25 33 66*



## SOMMAIRE

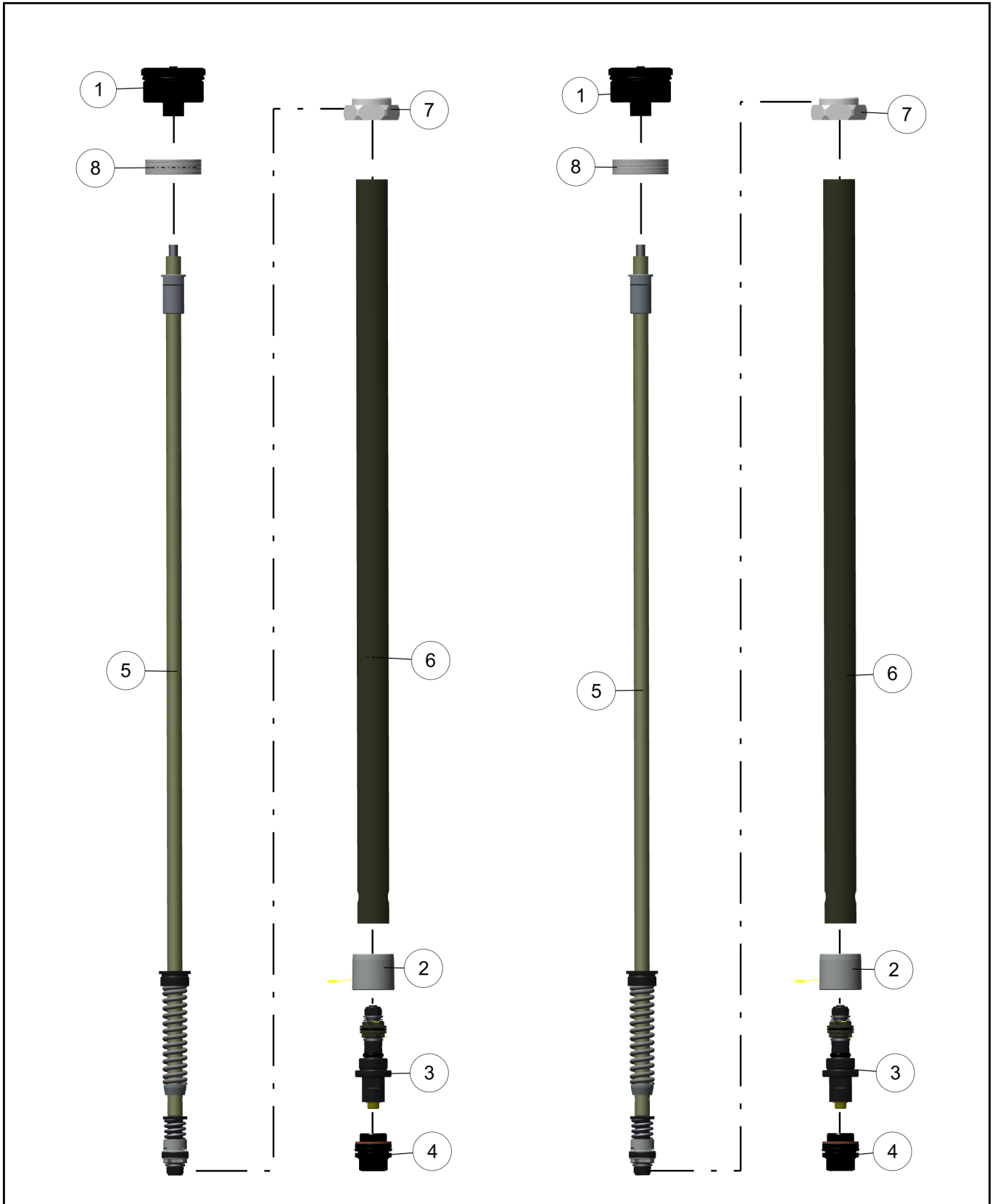
### SOMMAIRE

<b>Chapitre I : Présentation des éclatés et nomenclatures.....</b>	<b>3</b>
<b>Eclaté général .....</b>	<b>4</b>
<b>SE N°1 Bouchon Sup .....</b>	<b>6</b>
<b>SE N°2 Tige H .....</b>	<b>8</b>
<b>SE N°3 Bloc Comp .....</b>	<b>10</b>
<b>SE N°4 Bouchon D18 .....</b>	<b>12</b>



**CHAPITRE I:**  
**PRÉSENTATION DES ÉCLATÉS ET**  
**NOMENCLATURES**

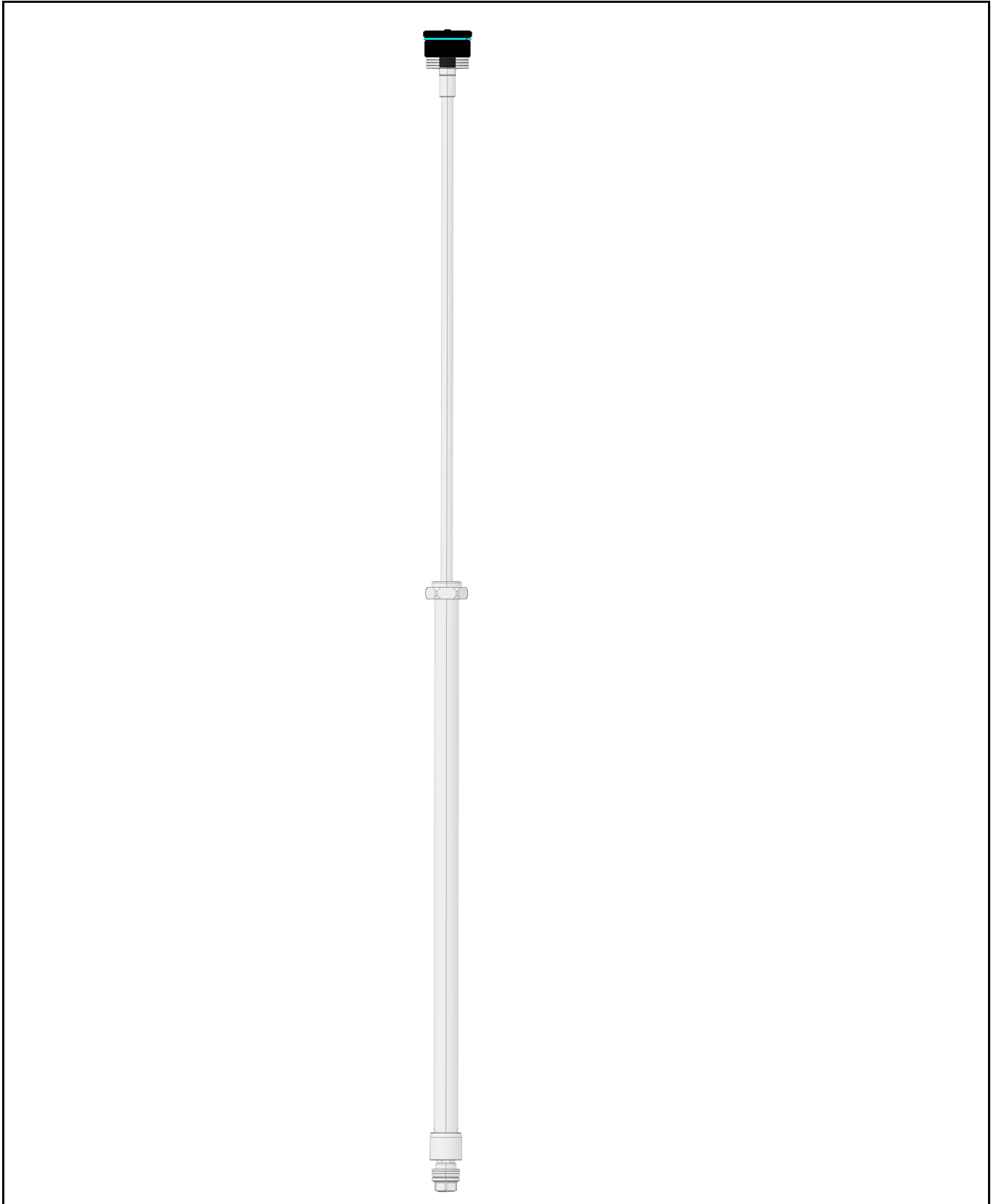
**ECLATÉ GÉNÉRAL**



**NOMENCLATURE**

NAME	REP	NAME	REF	IND	QTY
CARTOUCHE YAM YZ 1980			029-SE-028	-	2
	1	BOUCHON SUP M40X1	032-SE-018	-	1
	2	PISTON DE BUTEE CARTOUCHE	44020-D-072	-	1
	3	BLOC COMP D18	002-SE-046	-	1
	4	BOUCHON D18	039-SE-003	-	1
	5	TIGE CARTOUCHE D10	015SE078-568-550.5	-	1
	6	CYLINDRE FINI ALU D18	003SF02218C1/491.5	-	1
	7	GUIDE RESSORT D26 DELRIN BLANC	44020-D-073	-	1
	8	CALE COMP 2.5MM	44020-D-008	-	4

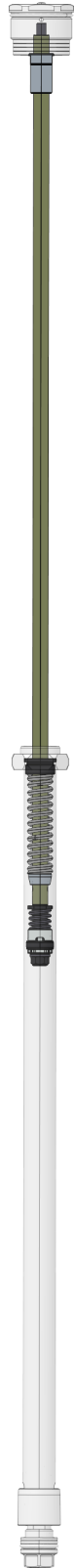
**SE N°1 : 032-SE-018\_BOUCHON-SUPERIEUR**



**NOMENCLATURE**

REP	NAME	TYPE	REF	IND	QTY
1	BOUCHON SUPERIEUR M40X1	PART	44020-D-070	-	1
2	VIS DETENTE	PART	150707-D-021	B	1
3	JOINT TORIQUE 4.47X1.78	PART	JT044703A3	-	1
4	VIS CHC M3X6 INOX	PART	VVCHC0306A0	-	1
5	JOINT TORIQUE 3X1.2	PART	JT030019A3	-	1
6	BILLE D2.5	PART	B25A	-	2
7	JOINT TORIQUE 8X3 VI	PART	JT080007B5	-	1
8	JOINT TORIQUE 35X2	PART	JT350004A3	-	1

**SE N°2 : 015SE078/568/550.5\_TIGE CARTOUCHE D10**

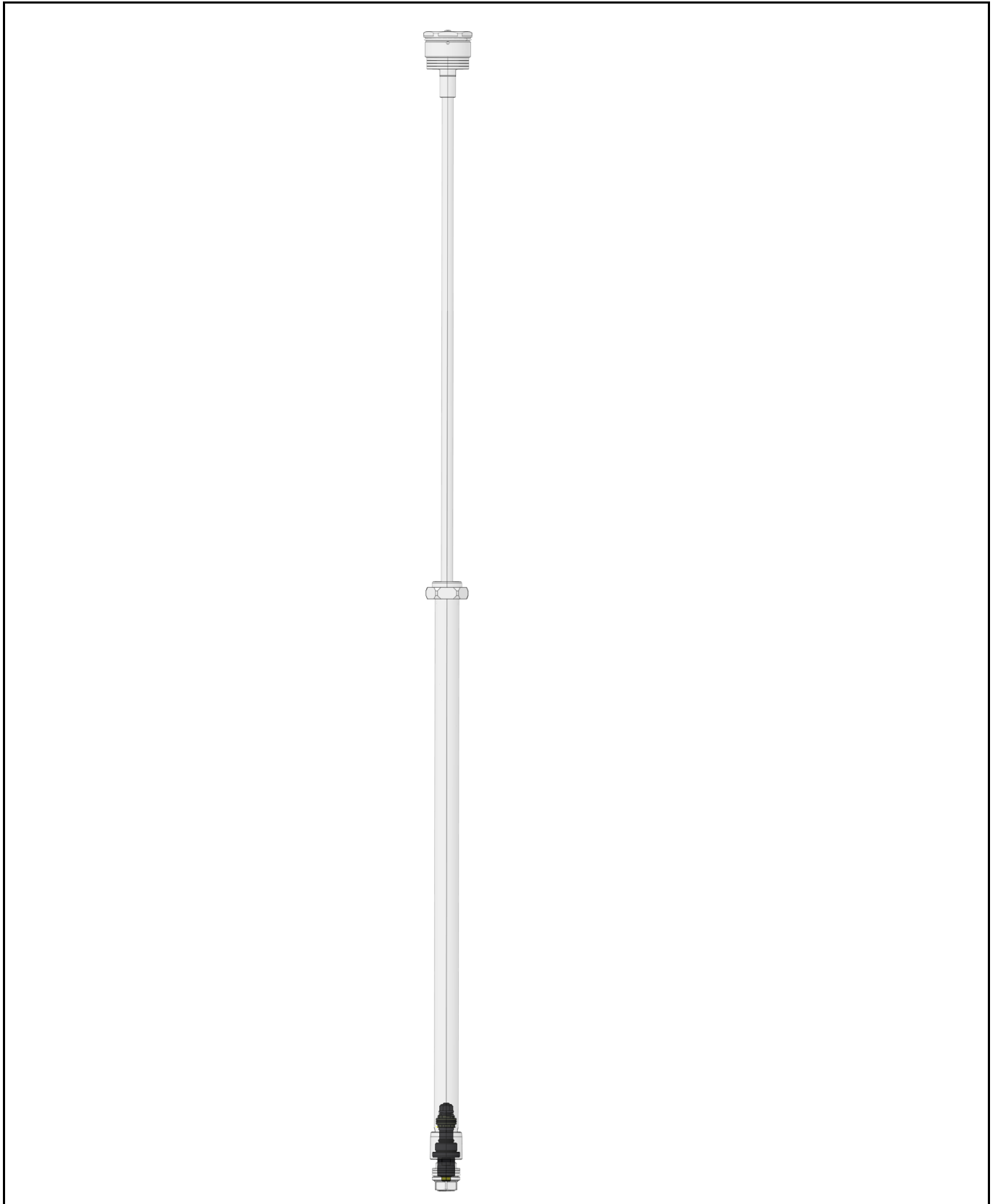




## NOMENCLATURE

REP	NAME	TYPE	REF	IND	QTY
1	BOUCHON CARTOUCHE	PART	151108-D-012	-	1
2	BAGUE PAP-1008-P10 OU P14	PART	GT01A10A	-	1
3	RESSORT DE DETENTE	PART	44020-D-071	-	1
4	APPUI RESSORT DET	PART	44020-D-011	-	1
5	TIGE FINIE ALU D10X7	PART	001SF02210A1/568	-	1
6	PORTE PISTON CONE-VALVE	PART	150707-D-175	A	1
7	ECROU TIGE M10X0.75	PART	43618-D-100	-	1
8	POINTEAU DET	PART	151108-D-082	-	1
9	TRANSMISSION DETENTE ALU 550.5MM	PART	150015D013/540.5		1
10	JOINT TORIQUE 4X1.5	PART	JT040002A3	-	1
11	PISTON D18 CONE VALVE	PART	150707-D-173	-	1
12	SETTING	PART	-	.	1
13	TOP PLATE 13X1.5	PART	230104-D-040	B	1
14	ECROU NYLSTOP M6	PART	VEN06A0	-	1
15	GUIDAGE PISTON DET 18	PART	150707-D-041	-	1
16	RESSORT	PART	RA1256670A	-	1
17	VALVE CONIQUE 7 °	PART	150707D174/1	-	1
18	RESSORT HV K=4	PART	91707-D-004	A	1
19	JONC	PART	091305-D-010	A	1
20	JOINT TORIQUE 10X1.5	PART	JT100002A3	-	1

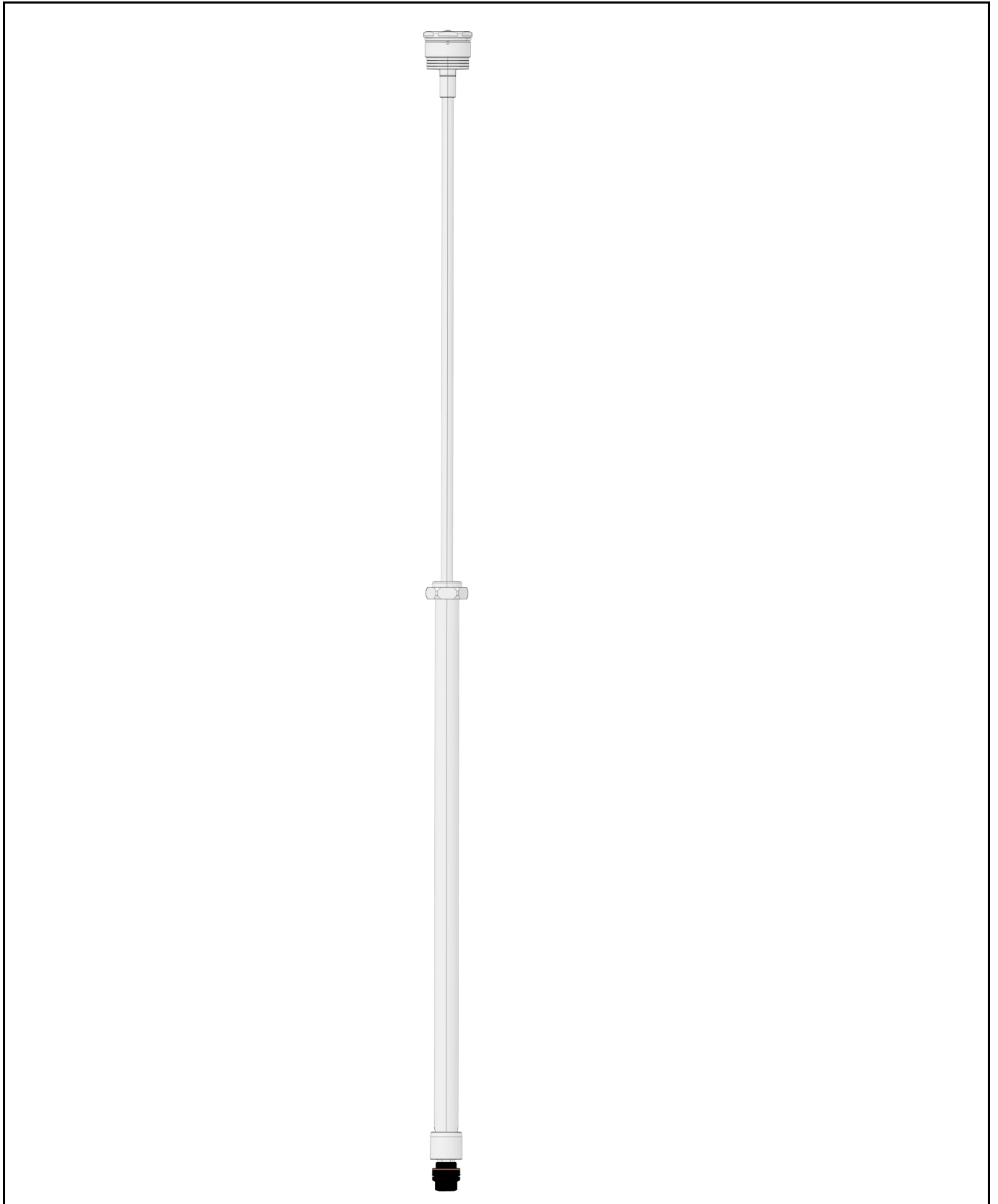
**SE N°3 : 002-SE-046\_BLOC DE COMP D18**



**NOMENCLATURE**

REP	NAME	TYPE	REF	IND	QTY
1	CORPS COMP	PART	44020-D-004	-	1
2	POINTO COMP	PART	150707-D-071	A	1
3	BILLE D2.5	PART	B25A	-	2
4	JOINT TORIQUE 8X3 VI	PART	JT080007B5	-	1
5	JOINT TORIQUE 5X1.5 NBR 70	PART	JT050002A3	-	1
6	TOP PLATE 13X1.5	PART	230104-D-040	B	1
7	SETTING	PART	-	.	1
8	PISTON COMPRESSION 18 FRITTÉ	PART	151613-D-042	-	1
9	GUIDE CLAPET REAL	PART	150707-D-023	A	1
10	JOINT TORIQUE 15X1.5	PART	JT150002A3	-	1
11	ECROU NYLSTOP M6	PART	VEN06A0	-	1
12	RESSORT REAL EVO	PART	151613-D-039	-	1

**SE N°3 : 039-SE-003-BOUCHON-DI8**



**NOMENCLATURE**

REP	NAME	TYPE	REF	IND	QTY
1	ECROU CARTOUCHE M15XD18	PART	44020-D-074	-	1
2	JOINT TORIQUE 20X2.5	PART	JT200005A3	-	1
3	JOINT TORIQUE 13X1.5	PART	JT130002A3	-	1
4	JOINT PLAT CUIVRE	PART	JP202241150H	-	1

**NOTES**

Lined area for notes, consisting of a large rectangular box with horizontal lines.

## NOTES

A large rectangular area with a black border, containing 25 horizontal lines for writing notes.

**[www.bos-suspension.com](http://www.bos-suspension.com)**

---



**4, Impasse Léonce Couture – F31200 TOULOUSE**

**/ +33(0)5 34 25 33 66**

**[sales@bos-suspension.com](mailto:sales@bos-suspension.com)**