



Pièces de rechange
Kit Cartouche YAMAHA YZ 89-90
44020-E-009



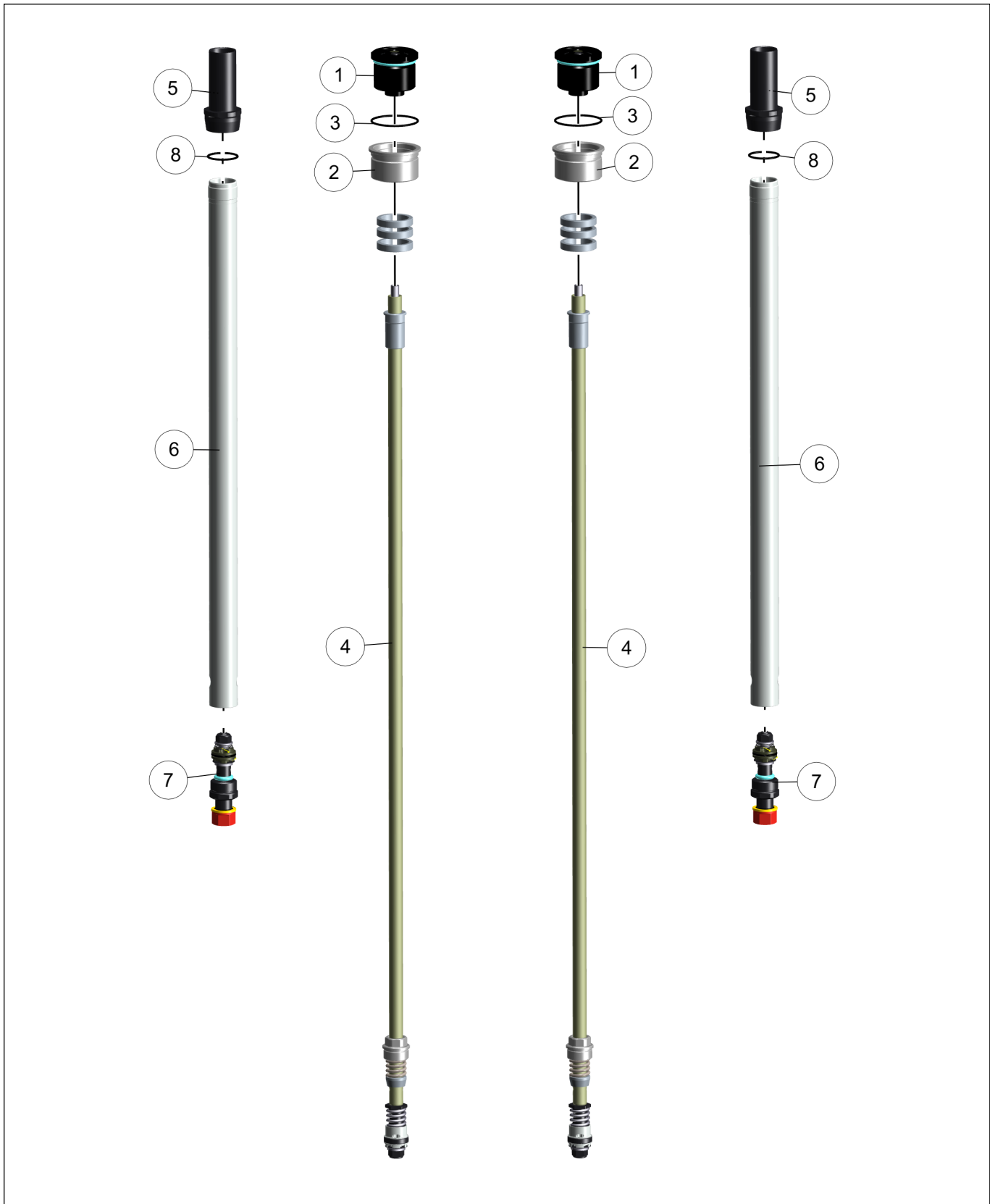
BOS Suspension

*4 Impasse Léonce Couture
ZA du Mont Blanc
31200 Toulouse - France*

Mel : sales@bos-suspension.com

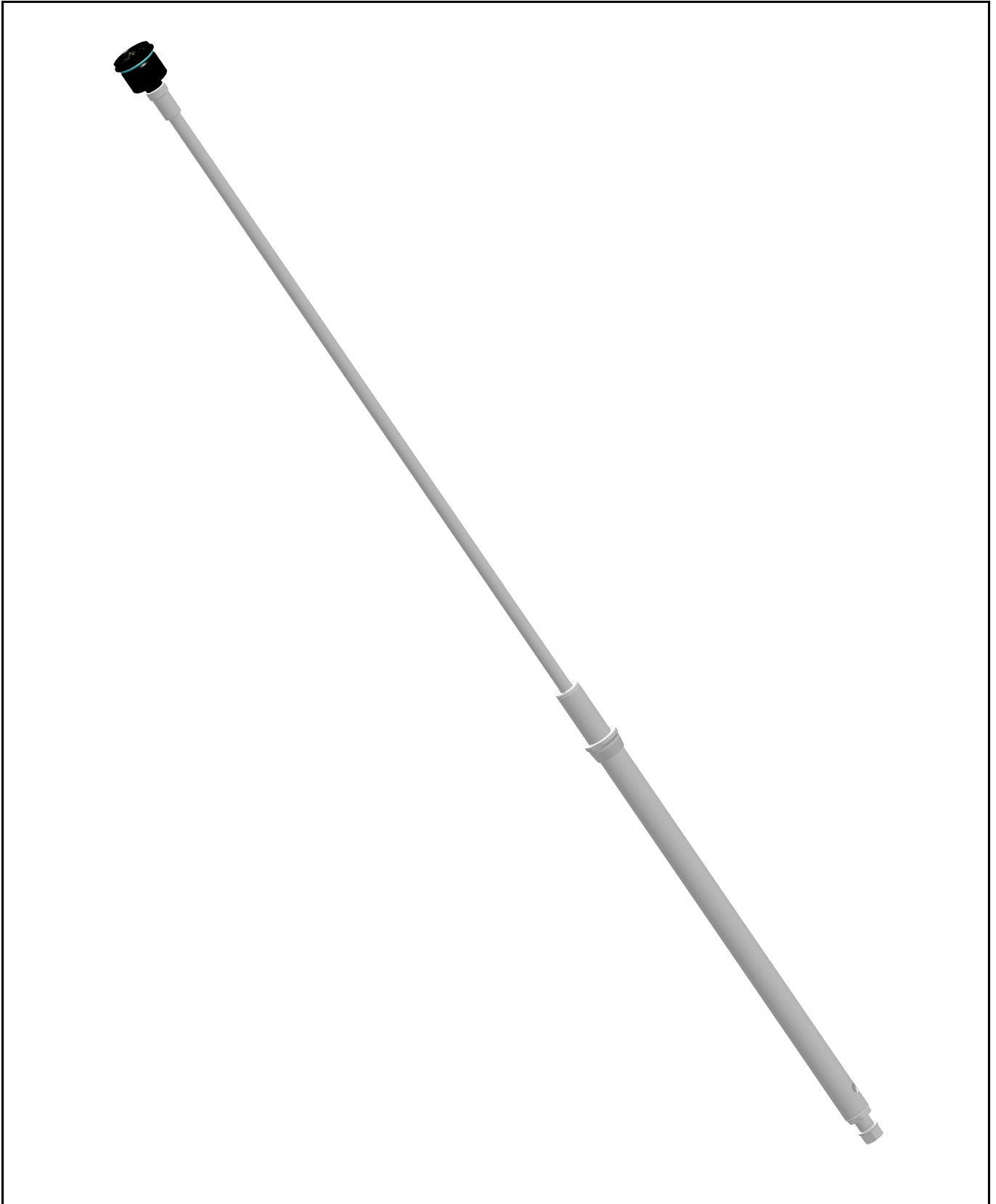
Tel : +33(0)5 34 25 33 66



ECLATÉ GÉNÉRAL

NOMENCLATURE

NAME	REP	NAME	REF	IND	QTY
CARTOUCHE D20.5 & PISTON D18			029-SE-029	-	2
	1	BOUCHON SUP M30	032-SE-014	-	1
	2	INTERFACE M34X1 / M30X1.5	44020-D-077	-	1
	3	JOINT TORIQUE 32X1.5	JT320002A3	-	1
	4	TIGE CARTOUCHE D10	015SE060_597_579-5	-	1
	5	INTERFACE CARTOUCHE	44020-D-022	A	1
	6	TUBE CARTOUCHE Ø20.5	44020-D-078	-	1
	7	BLOC COMP CARTOUCHE D20.5	002-SE-049	-	1
	8	JOINT TORIQUE 20X1.5	JT200002A3	-	1
	9	CALE RESSORT D20 X 5MM	44020-D-056	A	3

SE N°1 : 032-SE-017_BOUCHON-SUP

NOMENCLATURE

REP	NAME	TYPE	REF	IND	QTY
1	BOUCHON H D38	PART	44020-D-053	-	1
2	VIS DETENTE	PART	150707-D-021	B	1
3	JOINT TORIQUE 4.47X1.78	PART	JT044703A3	-	1
4	VIS CHC M3X6 INOX	PART	VVCHC0306A0	-	1
5	JOINT TORIQUE 3X1.2	PART	JT030019A3	-	1
6	BILLE D2.5	PART	B25A	-	2
7	JOINT TORIQUE 8X3 VI	PART	JT080007B5	-	1
8	JOINT TORIQUE 30X2	PART	JT300004A3	-	1

SE N°2 : 015SE060/597/579.5 TIGE CARTOUCHE D10 L597

NOMENCLATURE

REP	NAME	TYPE	REF	IND	QTY
1	GT CARTOUCHE LONG	PART	44020-D-061	-	1
2	BAGUE PAP-1008-P10 OU P14	PART	GT01A10A	-	1
3	RESSORT BUTE DET LONG	PART	151108-D-075	-	1
4	APPUI RESSORT DET	PART	44020-D-011	-	1
5	TIGE FINIE ALU D10X7	PART	001SF02210A1/597	-	1
6	PORTE PISTON CONE-VALVE	PART	150707-D-175	A	1
7	ECROU TIGE M10X0.75	PART	43618-D-100	-	1
8	POINTEAU DET	PART	151108-D-082	-	1
9	TRANSMISSION DETENTE ALU 579.5MM	PART	150015D013/579.5	-	1
10	JOINT TORIQUE 4X1.5	PART	JT040002A3	-	1
11	PISTON D18 CONE VALVE	PART	150707-D-173	-	1
12	SETTING	PART	-	-	1
13	TOP PLATE 13X1.5	PART	230104-D-040	B	1
14	ECROU NYLSTOP M6	PART	VEN06A0	-	1
15	GUIDAGE PISTON DET 18	PART	150707-D-041	-	1
16	RESSORT	PART	RA1256670A	-	1
17	VALVE CONIQUE 7 °	PART	150707D174/1	-	1
18	RESSORT HV K=4	PART	91707-D-004	A	1
19	JONC	PART	091305-D-010	A	1
20	JOINT TORIQUE 10X1.5	PART	JT100002A3	-	1

SE N°3 : 002-SE-049 BLOC DE COMP CARTOUCHE D20.5

NOMENCLATURE

REP	NAME	TYPE	REF	IND	QTY
1	CORPS COMP D20.5	PART	44020-D-079	-	1
2	POINTO COMP	PART	44020-D-023	-	1
3	BILLE D2.5	PART	B25A	-	2
4	JOINT TORIQUE 8X3 VI	PART	JT080007B5	-	1
5	JOINT TORIQUE 3.5X1.5	PART	JT035002A3	-	1
6	TOP PLATE 13X1.5	PART	230104-D-040	B	1
7	SETTING	PART	-	.	1
8	PISTON COMPRESSION 18 FRITTÉ	PART	151613-D-042	-	1
9	GUIDE CLAPET REAL	PART	150707-D-023	A	1
10	JOINT TORIQUE 15X1.5	PART	JT150002A3	-	2
11	ECROU NYLSTOP M6	PART	VEN06A0	-	1
12	ECROU INF	PART	44020-D-024	-	1
13	RESSORT REAL EVO	PART	151613-D-039	-	1
14	BAGUE BS 12.7X18X1.5	PART	JP127180150J		1

NOTES

Lined area for notes with 25 horizontal lines.

NOTES

A large rectangular area with a black border, containing numerous horizontal lines for writing notes.

www.bos-suspension.com



4, Impasse Léonce Couture – F31200 TOULOUSE

/ +33(0)5 34 25 33 66

sales@bos-suspension.com