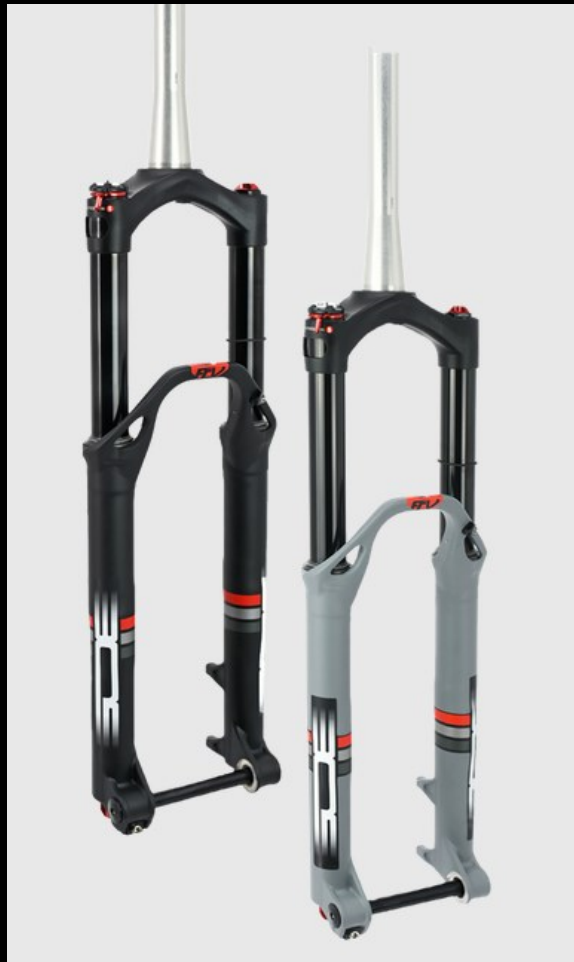


Notice Pièces de Rechange
DEVILLE II 29"
151815-E-141/142/143



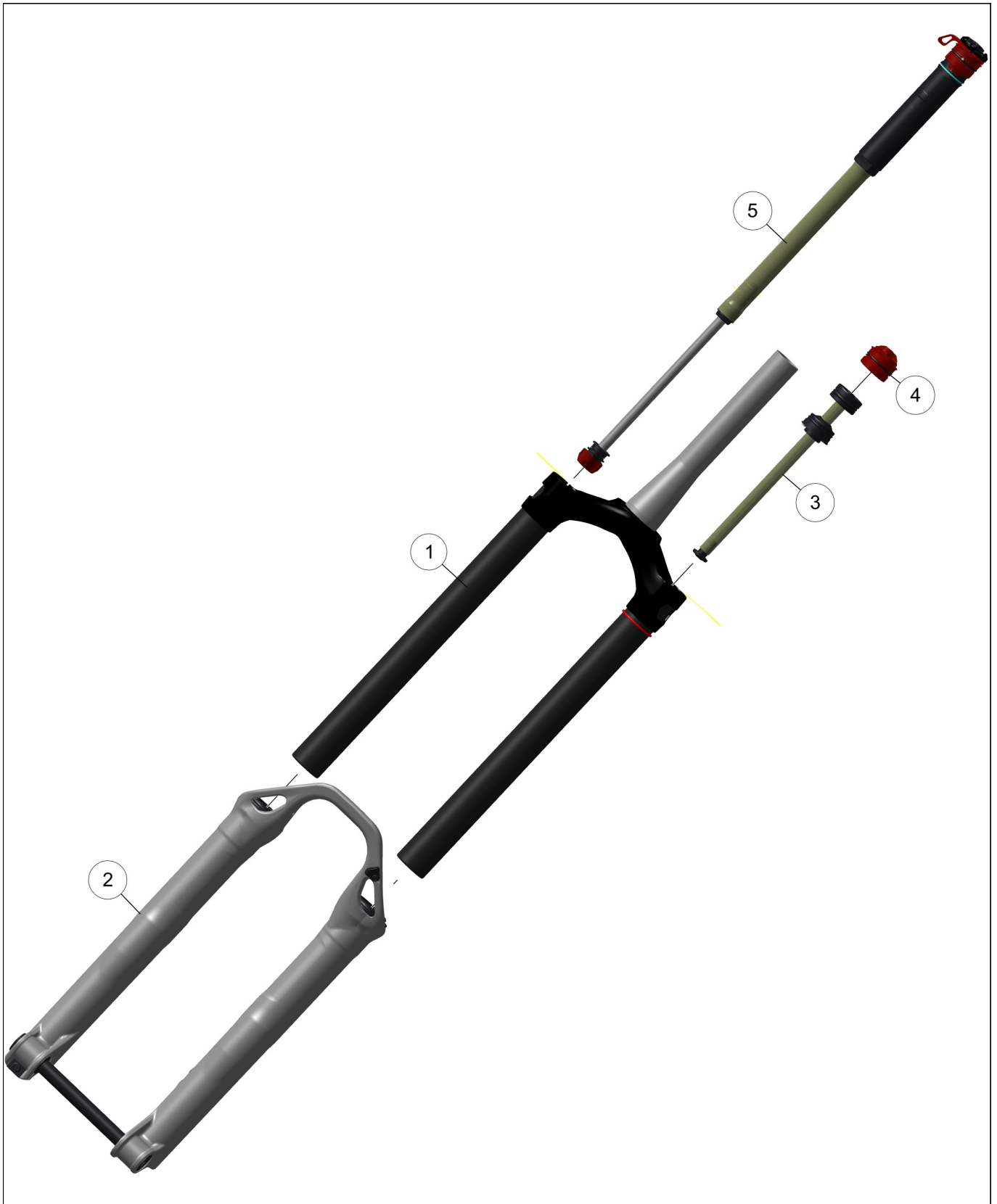
BOS Suspension

*4 Impasse Léonce Couture
ZA du Mont Blanc
31200 Toulouse - FRANCE*



NC_DEVILLE_II_29"

ECLATÉ DU PRODUIT



NOMENCLATURE

151815-E-141-DEVILLE-II-160MM

REP	NAME	TYPE	REF	IND	QTY
1	TPP DEVILLE 29"	ASSEMBLY	036-SE-007		1
2	CASTING DEVILLE 29"	ASSEMBLY	042-SE-002		1
3	TIGE AIR 160MM PLONGEURS EPAIS	ASSEMBLY	015-SE-047		1
4	BOUCHON AIR 35MM	ASSEMBLY	032-SE-005		1
5	CARTOUCHE FERMEE 160MM 29"	ASSEMBLY	029-SE-007		1

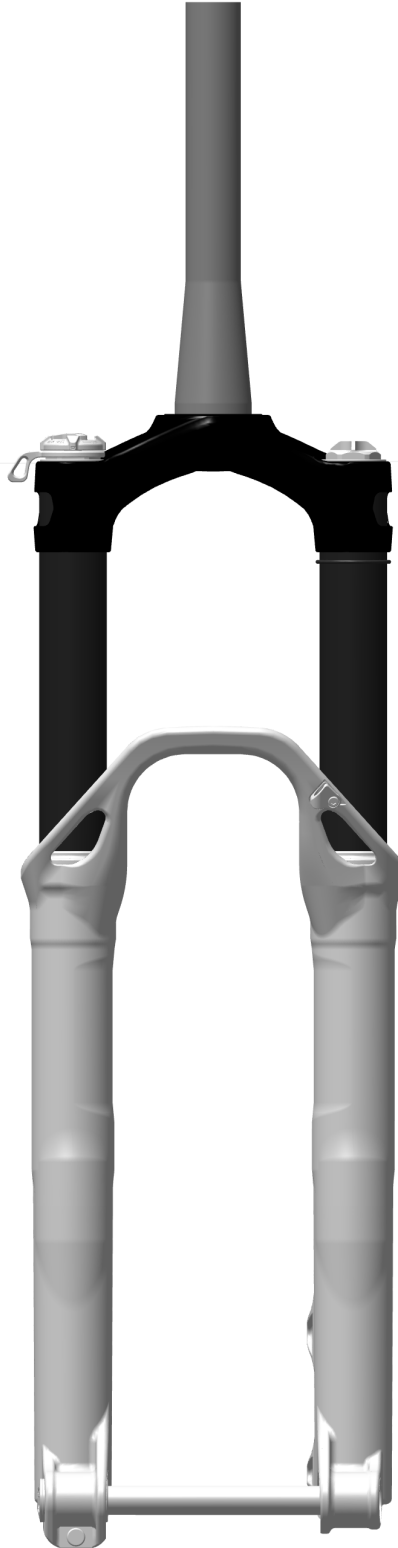
151815-E-142-DEVILLE-II-170MM

REP	NAME	TYPE	REF	IND	QTY
1	TPP DEVILLE 29" X 170MM	ASSEMBLY	036-SE-008		1
2	CASTING DEVILLE 29"	ASSEMBLY	042-SE-002		1
3	TIGE AIR 170MM PLONGEURS EPAIS	ASSEMBLY	015-SE-039		1
4	BOUCHON AIR 35MM	ASSEMBLY	032-SE-005		1
5	CARTOUCHE FERMEE 170MM 29"	ASSEMBLY	029-SE-011		1

151815-E-143-DEVILLE-II-150MM

REP	NAME	TYPE	REF	IND	QTY
1	TPP DEVILLE 29"	ASSEMBLY	036-SE-007		1
2	CASTING DEVILLE 29"	ASSEMBLY	042-SE-002		1
3	TIGE AIR 150MM	ASSEMBLY	015-SE-058		1
4	BOUCHON AIR 35MM	ASSEMBLY	032-SE-005		1
5	CARTOUCHE FERMEE 150MM 29"	ASSEMBLY	029-SE-019		1

SE N°1 : 036-SE-XXX-TPP DEVILLE 29"



NOMENCLATURE

036-SE-007-TPP-DEVILLE-29(DEVILLE 150MM ET 160MM)

REP	NAME	TYPE	REF	IND	QTY
1	TE	PART	151815-D-088	B	1
2	PIVOT	PART	151815-D-099	A	1
3	PLONGEUR 35MM 29"	PART	151815-D-117	A	2
4	TORE 30X2 VI 80SH	PART	JT300004B5	-	1

036-SE-008-TPP-DEVILLE-29 (DEVILLE 170MM)

REP	NAME	TYPE	REF	IND	QTY
1	TE	PART	151815-D-088	B	1
2	PIVOT	PART	151815-D-099	A	1
3	PLONGEUR 35MM 29"	PART	151815-D-117	A	2
4	TORE 30X2 VI 80SH	PART	JT300004B5	-	1

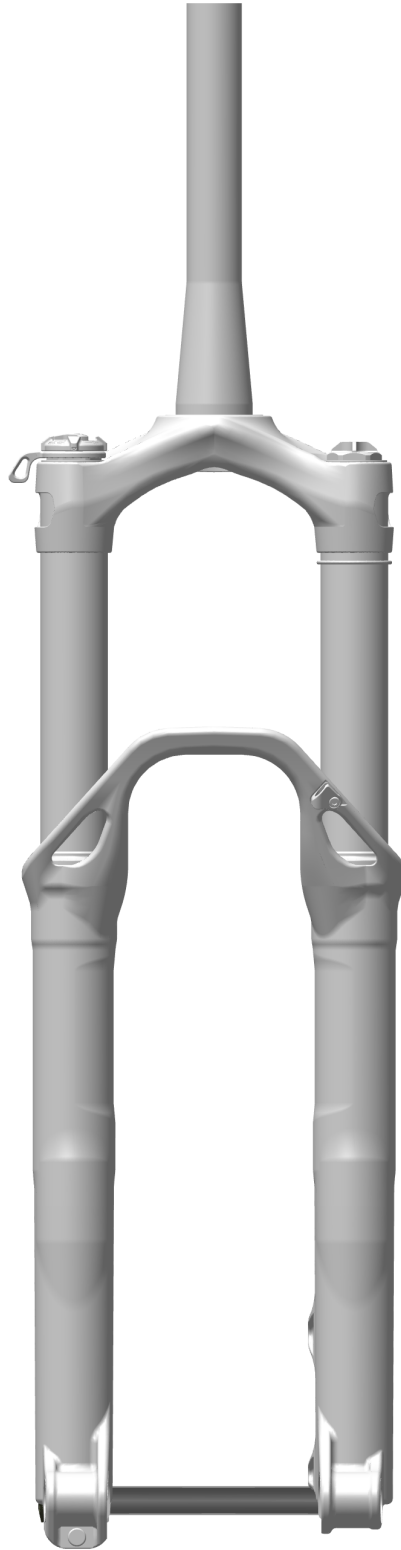
SE N°2 : 042-SE-002-CASTING DEVILLE 29"



NOMENCLATURE

REP	NAME	TYPE	REF	IND	QTY
1	CASTING 29"	PART	151815-D-112	A	1
2	BAGUE INF 35	PART	151815-D-003	A	2
3	BAGUE SUP 35	PART	151815-D-004	A	2
4	SEAL 35MM RB	PART	151815-D-126	-	2
5	INSERT PIED G	PART	151815-D-087	-	1
6	INSERT PIED D	PART	151108-D-021	A	1
7	VIS PIED D	PART	151815-D-086	-	1
8	PLAQUETTE VIS PIED	PART	151815-D-085	-	1
9	INSERT PIED AXE 15	PART	151815-D-027	-	1
10	GUIDE DURITE	PART	151815-D-068	B	1
11	VIS CHC M3X6 INOX	PART	VVCHC0306A0	-	1
12	JOINT TORIQUE 28X4	PART	JT280010A3	-	2
13	AXE 15MM	PART	151815-D-081	-	1
14	BOUCHON AXE	PART	151815-D-082	A	1
15	INSERT CLE	PART	151815-D-083	-	1

SE N°2.1 : AXE DE ROUE DEVILLE II

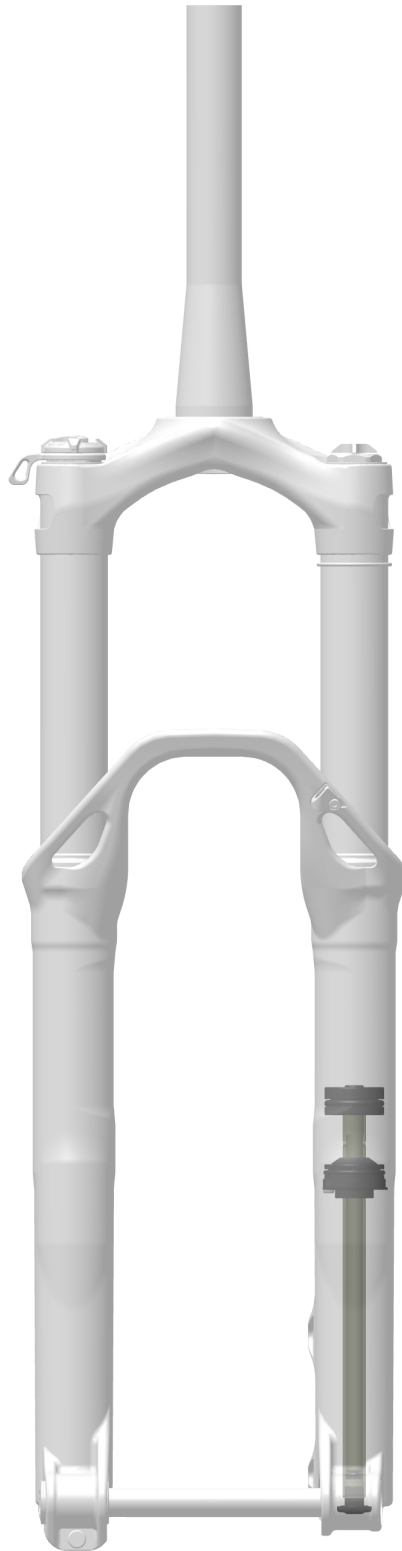


NOMENCLATURE

AXE DE 15MM					
REP	NAME	TYPE	REF	IND	QTY
1	AXE 15MM	PART	151815-D-081	-	1
2	INSERT CLE	PART	151815-D-083	-	1
3	BOUCHON AXE	PART	151815-D-082	A	1
4	ADAPTATEUR AXE 15	PART	151815-D-084	-	1

AXE 20MM					
REP	NAME	TYPE	REF	IND	QTY
1	AXE 20MM	PART	151815-D-080	-	1
2	INSERT CLE	PART	151815-D-083	-	1
3	BOUCHON AXE	PART	151815-D-082	A	1

SE N°3 : 015-SE-XXX-TIGE AIR 29"



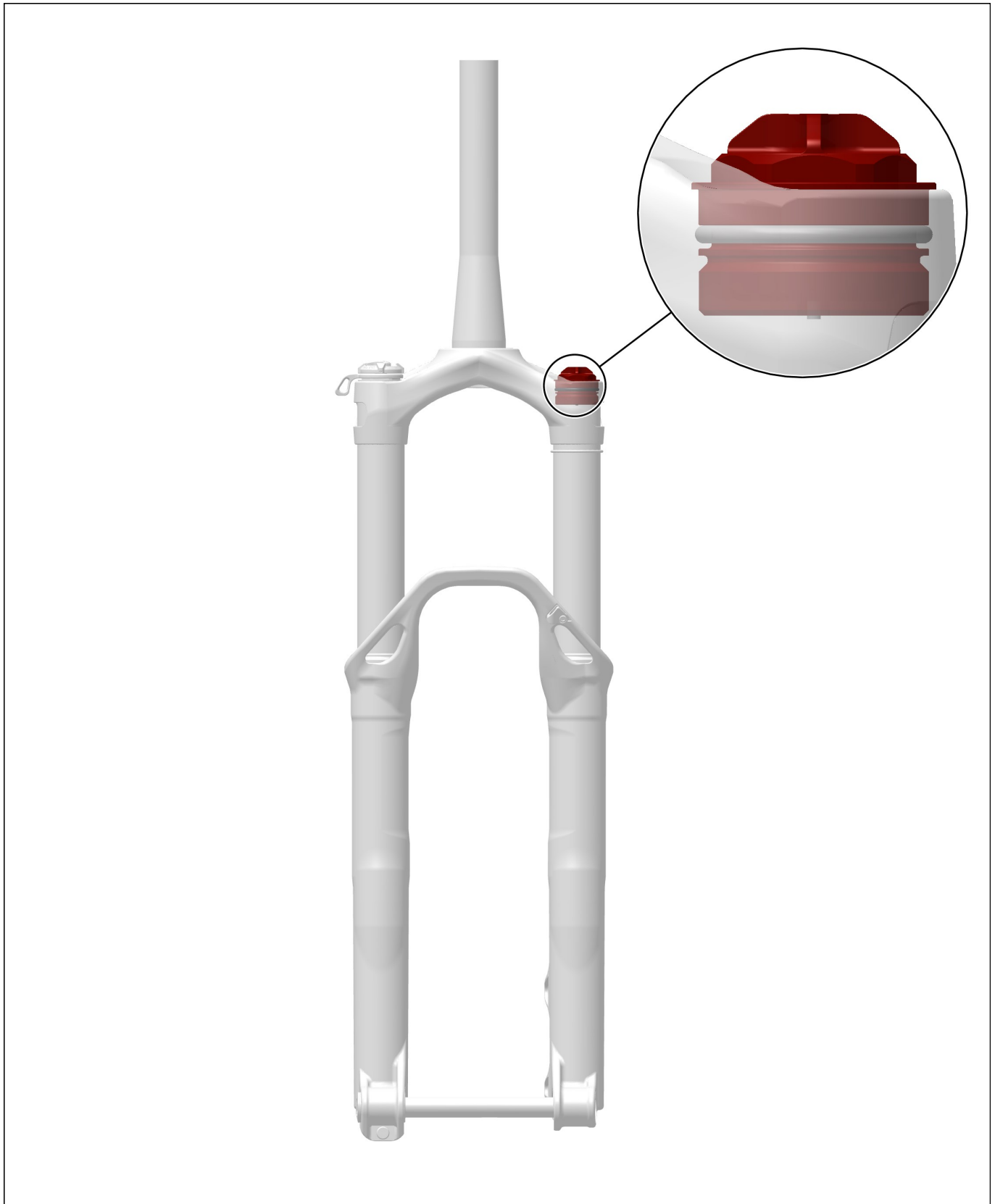
NOMENCLATURE

015-SE-047-TIGE AIR 160MM					
REP	NAME	TYPE	REF	IND	QTY
1	TIGE AIR 160MM	PART	151108-D-037	C	1
2	PORTE PISTON AIR	PART	151108-D-033	A	1
3	PISTON AIR 29"	PART	151815-D-123	-	1
4	JOINT TORIQUE 16.5X2	PART	JT165004A3	-	1
5	JOINT TORIQUE 24,6X3.6	PART	JT246026A3	-	1
6	RONDELLE PISTON AIR	PART	151108-D-035	-	1
7	VIS CHC M6X8 INOX	PART	VVCHC0608A0	-	1
8	JONC TIGE AIR	PART	151108-D-023	-	1
9	GUIDE TIGE AIR 29"	PART	151815-D-124	-	1
10	BUTE DETENTE	PART	150807-D-005	B	1
11	JOINT TORIQUE 12X3	PART	JT120007A3	-	1
12	JOINT TORIQUE 27X2.5	PART	JT270005A3	-	1
13	VIS INF AIR	PART	151108-D-117	-	1
14	JOINT TORIQUE 4.5X2.5	PART	JT045005A3	-	1
15	CLIPS TYPE 472 ACIER POUR ALÉSAGE DIAM 32	PART	CTA32B	-	1
16	VIS CHC M3X4 INOX	PART	VVCHC0304A0	-	1
17	APPUI DETENTE TIGE AIR	PART	151108-D-008	B	1
18	JOINT TORIQUE 11X2	PART	JT110004A3	-	1
19	RACLEUR SIMPLE LEVRE TYPE A1	PART	JR01L120A	-	1

015-SE-039-TIGE AIR 170MM					
REP	NAME	TYPE	REF	IND	QTY
1	TIGE AIR 170MM	PART	151815-D-128	-	1
2	PORTE PISTON AIR	PART	151108-D-033	A	1
3	PISTON AIR 29"	PART	151815-D-123	-	1
4	JOINT TORIQUE 16.5X2	PART	JT165004A3	-	1
5	JOINT TORIQUE 24,6X3.6	PART	JT246026A3	-	1
6	RONDELLE PISTON AIR	PART	151108-D-035	-	1
7	VIS CHC M6X8 INOX	PART	VVCHC0608A0	-	1
8	JONC TIGE AIR	PART	151108-D-023	-	1
9	GUIDE TIGE AIR 29"	PART	151815-D-124	-	1
10	BUTE DETENTE	PART	150807-D-005	B	1
11	JOINT TORIQUE 12X3	PART	JT120007A3	-	1
12	JOINT TORIQUE 27X2.5	PART	JT270005A3	-	1
13	VIS INF AIR	PART	151108-D-117	-	1
14	JOINT TORIQUE 4.5X2.5	PART	JT045005A3	-	1
15	CLIPS TYPE 472 ACIER POUR ALÉSAGE DIAM 32	PART	CTA32B	-	1
16	VIS CHC M3X4 INOX	PART	VVCHC0304A0	-	1
17	APPUI DETENTE TIGE AIR	PART	151108-D-008	B	1
18	JOINT TORIQUE 11X2	PART	JT110004A3	-	1
19	RACLEUR SIMPLE LEVRE TYPE A1	PART	JR01L120A	-	1
20	JOINT TORIQUE 10X3 NBR 70	PART	JT100007A3	-	2

015-SE-058-TIGE AIR 150MM					
REP	NAME	TYPE	REF	IND	QTY
1	TIGE AIR 150MM	PART	151108-D-112	-	1
2	PORTE PISTON AIR	PART	151108-D-033	A	1
3	PISTON AIR 29"	PART	151815-D-123	-	1
4	JOINT TORIQUE 16.5X2	PART	JT165004A3	-	1
5	JOINT TORIQUE 24,6X3.6	PART	JT246026A3	-	1
6	RONDELLE PISTON AIR	PART	151108-D-035	-	1
7	VIS CHC M6X8 INOX	PART	VVCHC0608A0	-	1
8	JONC TIGE AIR	PART	151108-D-023	-	1
9	GUIDE TIGE AIR 29"	PART	151815-D-124	-	1
10	BUTE DETENTE	PART	150807-D-005	B	1
11	JOINT TORIQUE 12X3	PART	JT120007A3	-	1
12	JOINT TORIQUE 27X2.5	PART	JT270005A3	-	1
13	VIS INF AIR	PART	151108-D-117	-	1
14	JOINT TORIQUE 4.5X2.5	PART	JT045005A3	-	1
15	CLIPS TYPE 472 ACIER POUR ALÉSAGE DIAM 32	PART	CTA32B	-	1
16	VIS CHC M3X4 INOX	PART	VVCHC0304A0	-	1
17	APPUI DETENTE TIGE AIR	PART	151108-D-008	B	1
18	JOINT TORIQUE 11X2	PART	JT110004A3	-	1
19	RACLEUR SIMPLE LEVRE TYPE A1	PART	JR01L120A	-	1

SE N°4 : 032-SE-005 BOUCHON AIR 35MM



NOMENCLATURE

REP	NAME	TYPE	REF	IND	QTY
1	BOUCHON AIR	PART	151815-D-013	B	1
2	JOINT TORIQUE 28X2.5	PART	JT280005A3	-	1
3	BOUCHON VALVE	PART	151412-D-053	A	1
4	JOINT TORIQUE 4.47X1.78	PART	JT044703A3	-	1
5	OBUS SCHADER	PART	319400		1

SE N°5 : 029-SE-XX-CARTOUCHE FERMEE 29"



NOMENCLATURE

029-SE-007-CARTOUCHE FERMEE 29" 160MM					
REP	NAME	TYPE	REF	IND	QTY
1	PORTE PISTON COMP	PART	151815-D-077	-	1
2	TIGE BLOC COMP	PART	151815-D-055	B	1
3	POINTEAU COMPRESSION	PART	151815-D-059	-	1
4	RESSORT POINTEAU K0.4	PART	151815D060/0.4	-	1
5	MASSELOTTE FCV	PART	151815-D-069	-	1
6	GUIDE RESSORT FCV	PART	151613-D-054	A	1
7	RESSORT FCV K40	PART	151613D004/40	-	1
8	TOP PLATE	PART	150005-D-012	B	1
9	PISTON COMPRESSION	PART	151613-D-089	A	1
10	DOUILLE REAL	PART	151613-D-056	-	1
11	COUPELLE REAL	PART	151613-D-055	-	1
12	ECROU BAS M8X1 INOX	PART	VEHM08A1	-	1
13	CLAPET	PART	CLAPD1220025	-	1
14	RESSORT REAL	PART	151613-D-070	-	1
15	BARILLET	PART	151815-D-056	B	1
16	BOUCHON BLOC HYDRO	PART	151815-D-054	B	1
17	RESSORT RESERVOIR	PART	151815D073/0.8	-	1
18	ENTRAINEUR COMPRESSION HV	PART	151815-D-058	A	1
19	VIS COMPRESSION BV	PART	151815-D-066	-	1
20	TRANSMISSION COMPRESSION BV	PART	151815-D-061	-	1
21	TRANSMISSION COMPRESSION HV	PART	151815-D-057	-	1
22	BILLE D2.5	PART	B25A	-	4
23	RESSORT INDEXATION	PART	RA4025045B	-	2
24	ECROU BOUCHON HYDRO	PART	151815-D-062	A	1
25	STHC M3X4 INOX POINTUE	PART	VVSTHC0304A0PT	-	1
26	VIS BUTE BARILLET	PART	151815-D-065	-	1
27	JOINT TORIQUE	PART	JT110002A3	-	1
28	JOINT TORIQUE 4X1.5	PART	JT040002A3	-	1
29	JOINT TORIQUE	PART	JT045001A3	-	1
30	JOINT TORIQUE 3X1	PART	JT030001A3	-	2
31	JOINT TORIQUE	PART	JT070001A3	-	2
32	JOINT TORIQUE 28X2.5	PART	JT280005A3	-	1
33	JOINT TORIQUE 24X1.5	PART	JT240002A3	-	1
34	JOINT TORIQUE	PART	JT170002A3	-	1
35	CLAPET	PART	CLAPD1216020	-	5
36	RONDELLE CALAGE 16X22X1	PART	VR162210B	-	3
37	JOINT TORIQUE	PART	JT075002A3	-	1
38	RESERVOIR 2	PART	151815-D-129	-	1
39	JOINT TORIQUE	PART	JT270002A3	-	1
40	JOINT TORIQUE	PART	JT190002A3	-	1
41	TUBE CARTOUCHE 207MM	PART	151815D008/207	-	1
42	BOUCHON CARTOUCHE	PART	151815-D-049	-	1
43	BAGUE PAP-1015-P10 OU P14	PART	GT01A10D	-	1
44	JOINT QUAD RING 10,2X3	PART	JQ102006B3	-	1
45	JOINT TORIQUE 16X1.5	PART	JT160002A3	-	1
46	LEVIER PLATEFORME	PART	151815-D-072	A	1
47	CHC M2X5 INOX	PART	VVCHC0205A0	-	2
48	MOLETTE COMPRESSION BV	PART	151815-D-092	-	1
49	VIS FHC M3X6 INOX	PART	VVFFHC0306A0	-	1
50	MOLETTE COMPRESSION HAUTE VITESSE	PART	151815-D-091	-	1
51	STHC M2X4	PART	VVSTHC0204A0	-	1
52	PISTON DIVISEUR	PART	151815-D-051	-	1
53	GUIDAGE PISTON	PART	150807-D-016	-	2
54	JOINT TORIQUE 22X2.5 NBR 70	PART	JT220005A3	-	1
55	BAGUE ANTI-EXTRUSION	PART	BAE16212010E	-	1
56	JOINT TORIQUE 12.37X2.62 NBR 70	PART	JT123706A3	-	1
57	PORTE PISTON DETENTE	PART	151815-D-090	-	1
58	PISTON DET 18 FRITTE	PART	151613-D-041	-	1
59	GUIDAGE PISTON DET 18	PART	150707-D-041	-	1
60	RESSORT REAL	PART	151815-D-115	-	1

61	CLAPET	PART	CLAPD0815020	-	1
62	SETTING	PART	-	-	1
63	TOP PLATE 13X1.5	PART	230104-D-040	B	1
64	ECROU BAS M6X1 INOX	PART	VEHM06A1	-	1
65	JOINT TORIQUE	PART	JT080007A3	-	2
66	TIGE CARTOUCHE 160MM 29"	PART	151815D007/209.5	B	1
67	EMBOUT TIGE INF	PART	151412-D-044	-	1
68	ECROU TIGE INFEREIRUR	PART	151108-D-085	-	1
69	JOINT TORIQUE 15X1.5	PART	JT150002A3	-	1
70	JOINT TORIQUE 6X1 NBR70	PART	JT060001A3	-	1
71	VIS DETENTE	PART	151815-D-050	-	1
72	JOINT TORIQUE 6X3	PART	JT060007A3	-	1
73	MOLETTE DETENTE	PART	151412-D-023	B	1
74	STHC M3X8 INOX	PART	VVSTHC0308A0	-	1
75	TRANSMISSION DETENTE ALU 167MM	PART	150013D201/167	-	1
76	POINTEAU DETENTE	PART	151815-D-103	-	1
77	RESSORT	PART	RA2506670B	-	1
78	JOINT TORIQUE 4.5X1.5	PART	JT045002A3	-	1

NOMENCLATURE

029-SE-011-CARTOUCHE FERMEE 29" 170MM					
REP	NAME	TYPE	REF	IND	QTY
1	PORTE-PISTON-FCV-COURT	PART	151815-D-095	-	1
2	TIGE BLOC COMP	PART	151815-D-055	B	1
3	POINTEAU COMPRESSION	PART	151815-D-059	-	1
4	RESSORT POINTEAU K0.4	PART	151815D060/0.4	-	1
5	MASSE-FCV-COURTE	PART	151815-D-093	-	1
6	TOP PLATE COMP	PART	151916-D-030	-	1
7	RESSORT FCV K40	PART	151613D004/40	-	1
8	PISTON COMPRESSION	PART	151613-D-089	A	1
9	ECROU REAL COURT	PART	151815-D-094	-	1
10	CLAPET	PART	CLAPD1220025	-	1
11	RESSORT REAL	PART	151613-D-070	-	1
12	BARILLET	PART	151815-D-056	B	1
13	BOUCHON BLOC HYDRO	PART	151815-D-054	B	1
14	PRESSURE SPRING 170MM	PART	151815D096/0.8	-	1
15	ENTRAINEUR COMPRESSION HV	PART	151815-D-058	A	1
16	VIS COMPRESSION BV	PART	151815-D-066	-	1
17	TRANSMISSION COMPRESSION BV	PART	151815-D-061	-	1
18	TRANSMISSION COMPRESSION HV	PART	151815-D-057	-	1
19	BILLE D2.5	PART	B25A	-	4
20	RESSORT INDEXATION	PART	RA4025045B	-	1
21	ECROU BOUCHON HYDRO	PART	151815-D-062	A	1
22	STHC M3X4 INOX POINTUE	PART	VVSTHC0304A0PT	-	1
23	VIS BUTE BARILLET	PART	151815-D-065	-	1
24	RESSORT INDEXATION	PART	RA4025040B	-	1
25	JOINT TORIQUE	PART	JT110002A3	-	1
26	JOINT TORIQUE 4X1.5	PART	JT040002A3	-	1
27	JOINT TORIQUE	PART	JT045001A3	-	1
28	JOINT TORIQUE 3X1	PART	JT030001A3	-	2
29	JOINT TORIQUE	PART	JT070001A3	-	2
30	JOINT TORIQUE 28X2.5	PART	JT280005A3	-	1
31	JOINT TORIQUE 24X1.5	PART	JT240002A3	-	1
32	JOINT TORIQUE	PART	JT170002A3	-	1
33	CLAPET	PART	CLAPD1216020	-	5
34	RONDELLE CALAGE 16X22X1	PART	VR162210B	-	3
35	JOINT TORIQUE	PART	JT075002A3	-	1
36	RESERVOIR 2	PART	151815-D-129	-	1
37	JOINT TORIQUE	PART	JT270002A3	-	1
38	JOINT TORIQUE	PART	JT190002A3	-	1
39	TUBE CARTOUCHE 207MM	PART	151815D008/207	-	1
40	BOUCHON CARTOUCHE	PART	151815-D-049	-	1
41	BAGUE PAP-1015-P10 OU P14	PART	GT01A10D	-	1
42	JOINT QUAD RING 10,2X3	PART	JQ102006B3	-	1
43	JOINT TORIQUE 16X1.5	PART	JT160002A3	-	1
44	LEVIER PLATEFORME	PART	151815-D-072	A	1
45	CHC M2X5 INOX	PART	VVCHC0205A0	-	2
46	MOLETTE COMPRESSION BV	PART	151815-D-092	-	1
47	VIS FHC M3X6 INOX	PART	VVFHC0306A0	-	1
48	MOLETTE COMPRESSION HAUTE VITESSE	PART	151815-D-091	-	1
49	STHC M2X4	PART	VVSTHC0204A0	-	1
50	PISTON DIVISEUR	PART	151815-D-051	-	1
51	GUIDAGE PISTON	PART	150807-D-016	-	2
52	JOINT TORIQUE 22X2.5 NBR 70	PART	JT220005A3	-	1
53	BAGUE ANTI-EXTRUSION	PART	BAE16212010E	-	1
54	JOINT TORIQUE 12.37X2.62 NBR 70	PART	JT123706A3	-	1
55	PORTE PISTON DETENTE	PART	151815-D-090	-	1
56	PISTON DET 18 FRITTE	PART	151613-D-041	-	1
57	GUIDAGE PISTON DET 18	PART	150707-D-041	-	1
58	RESSORT REAL	PART	151815-D-115	-	1
59	CLAPET	PART	CLAPD0815020	-	1
60	SETTING	PART	-	-	1

61	TOP PLATE 13X1.5	PART	230104-D-040	B	1
62	ECROU BAS M6X1 INOX	PART	VEHM06A1	-	1
63	JOINT TORIQUE	PART	JT080007A3	-	2
64	TIGE CARTOUCHE 170MM 29"	PART	151815D007/219.9	B	1
65	EMBOUT TIGE INF	PART	151412-D-044	-	1
66	ECROU TIGE INFEREIRUR	PART	151108-D-085	-	1
67	JOINT TORIQUE 15X1.5	PART	JT150002A3	-	1
68	JOINT TORIQUE 6X1 NBR70	PART	JT060001A3	-	1
69	VIS DETENTE	PART	151815-D-050	-	1
70	JOINT TORIQUE 6X3	PART	JT060007A3	-	1
71	MOLETTE DETENTE	PART	151412-D-023	B	1
72	STHC M3X8 INOX	PART	VVSTHC0308A0	-	1
73	TRANSMISSION DETENTE ALU 177MM	PART	150013D201/177	-	1
74	POINTEAU DETENTE	PART	151815-D-103	-	1
75	RESSORT	PART	RA2506670B	-	1
76	JOINT TORIQUE 4.5X1.5	PART	JT045002A3	-	1

NOMENCLATURE

029-SE-019-CARTOUCHE FERMEE 29" 150MM					
REP	NAME	TYPE	REF	IND	QTY
1	PORTE PISTON COMP	PART	151815-D-077	-	1
2	TIGE BLOC COMP	PART	151815-D-055	B	1
3	POINTEAU COMPRESSION	PART	151815-D-059	-	1
4	RESSORT POINTEAU K0.4	PART	151815D060/0.4	-	1
5	MASSELOTTE FCV	PART	151815-D-069	-	1
6	GUIDE RESSORT FCV	PART	151613-D-054	A	1
7	RESSORT FCV K40	PART	151613D004/40	-	1
8	TOP PLATE	PART	150005-D-012	B	1
9	PISTON COMPRESSION	PART	151613-D-089	A	1
10	DOUILLE REAL	PART	151613-D-056	-	1
11	COUPELLE REAL	PART	151613-D-055	-	1
12	ECROU BAS M8X1 INOX	PART	VEHM08A1	-	1
13	CLAPET	PART	CLAPD1220025	-	1
14	RESSORT REAL	PART	151613-D-070	-	1
15	BARILLET	PART	151815-D-056	B	1
16	BOUCHON BLOC HYDRO	PART	151815-D-054	B	1
17	RESSORT RESERVOIR	PART	151815D073/0.8	-	1
18	ENTRAINEUR COMPRESSION HV	PART	151815-D-058	A	1
19	VIS COMPRESSION BV	PART	151815-D-066	-	1
20	TRANSMISSION COMPRESSION BV	PART	151815-D-061	-	1
21	TRANSMISSION COMPRESSION HV	PART	151815-D-057	-	1
22	BILLE D2.5	PART	B25A	-	4
23	RESSORT INDEXATION	PART	RA4025045B	-	2
24	ECROU BOUCHON HYDRO	PART	151815-D-062	A	1
25	STHC M3X4 INOX POINTUE	PART	VVSTHC0304AOPT	-	1
26	VIS BUTE BARILLET	PART	151815-D-065	-	1
27	JOINT TORIQUE	PART	JT110002A3	-	1
28	JOINT TORIQUE 4X1.5	PART	JT040002A3	-	1
29	JOINT TORIQUE	PART	JT045001A3	-	1
30	JOINT TORIQUE 3X1	PART	JT030001A3	-	2
31	JOINT TORIQUE	PART	JT070001A3	-	2
32	JOINT TORIQUE 28X2.5	PART	JT280005A3	-	1
33	JOINT TORIQUE 24X1.5	PART	JT240002A3	-	1
34	JOINT TORIQUE	PART	JT170002A3	-	1
35	CLAPET	PART	CLAPD1216020	-	5
36	RONDELLE CALAGE 16X22X1	PART	VR162210B	-	3
37	JOINT TORIQUE	PART	JT075002A3	-	1
38	RESERVOIR 2	PART	151815-D-129	-	1
39	JOINT TORIQUE	PART	JT270002A3	-	1
40	JOINT TORIQUE	PART	JT190002A3	-	1
41	TUBE CARTOUCHE 207MM	PART	151815D008/207	-	1
42	BOUCHON CARTOUCHE	PART	151815-D-049	-	1
43	BAGUE PAP-1015-P10 OU P14	PART	GT01A10D	-	1
44	JOINT QUAD RING 10,2X3	PART	JQ102006B3	-	1
45	JOINT TORIQUE 16X1.5	PART	JT160002A3	-	1
46	LEVIER PLATEFORME	PART	151815-D-072	A	1
47	CHC M2X5 INOX	PART	VVCHC0205A0	-	2
48	MOLETTE COMPRESSION BV	PART	151815-D-092	-	1
49	VIS FHC M3X6 INOX	PART	VVFHC0306A0	-	1
50	MOLETTE COMPRESSION HAUTE VITESSE	PART	151815-D-091	-	1
51	STHC M2X4	PART	VVSTHC0204A0	-	1
52	PISTON DIVISEUR	PART	151815-D-051	-	1
53	GUIDAGE PISTON	PART	150807-D-016	-	2
54	JOINT TORIQUE 22X2.5 NBR 70	PART	JT220005A3	-	1
55	BAGUE ANTI-EXTRUSION	PART	BAE16212010E	-	1
56	JOINT TORIQUE 12.37X2.62 NBR 70	PART	JT123706A3	-	1
57	PORTE PISTON DETENTE	PART	151815-D-090	-	1
58	PISTON DET 18 FRITTE	PART	151613-D-041	-	1
59	GUIDAGE PISTON DET 18	PART	150707-D-041	-	1
60	RESSORT REAL	PART	151815-D-115	-	1

61	CLAPET	PART	CLAPD0815020	-	1
62	SETTING	PART	-	-	1
63	TOP PLATE 13X1.5	PART	230104-D-040	B	1
64	ECROU BAS M6X1 INOX	PART	VEHM06A1	-	1
65	JOINT TORIQUE	PART	JT080007A3	-	2
66	TIGE CARTOUCHE 150MM 29"	PART	151815D007/199.5	B	1
67	EMBOUT TIGE INF	PART	151412-D-044	-	1
68	ECROU TIGE INFEREIRUR	PART	151108-D-085	-	1
69	JOINT TORIQUE 15X1.5	PART	JT150002A3	-	1
70	JOINT TORIQUE 6X1 NBR70	PART	JT060001A3	-	1
71	VIS DETENTE	PART	151815-D-050	-	1
72	JOINT TORIQUE 6X3	PART	JT060007A3	-	1
73	MOLETTE DETENTE	PART	151412-D-023	B	1
74	STHC M3X8 INOX	PART	VVSTHC0308A0	-	1
75	TRANSMISSION DETENTE ALU 157MM	PART	150013D201/157	-	1
76	POINTEAU DETENTE	PART	151815-D-103	-	1
77	RESSORT	PART	RA2506670B	-	1
78	JOINT TORIQUE 4.5X1.5	PART	JT045002A3	-	1

NOTES

Lined area for notes.

www.bos-suspension.com



4, Impasse Léonce Couture – F31200 TOULOUSE

/ +33(0)5 34 25 33 66

sales@bos-suspension.com