

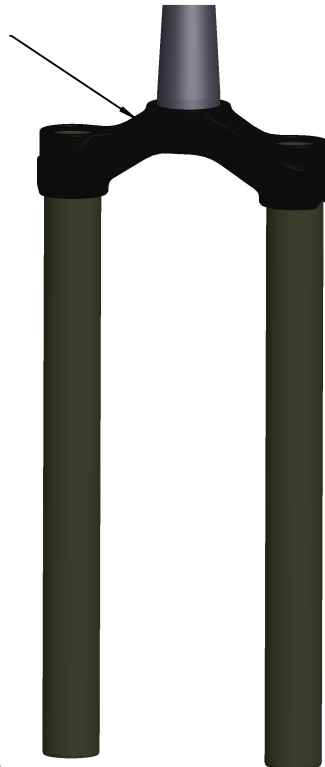
150707-SE-050 = 150707-SE-044 + 150707-SE-045

150707-SE-043 : Tapered
150707SE043/ST : Standard

Bio Oil

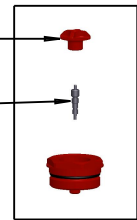


150707-SE-010



151108-SE-017

319300



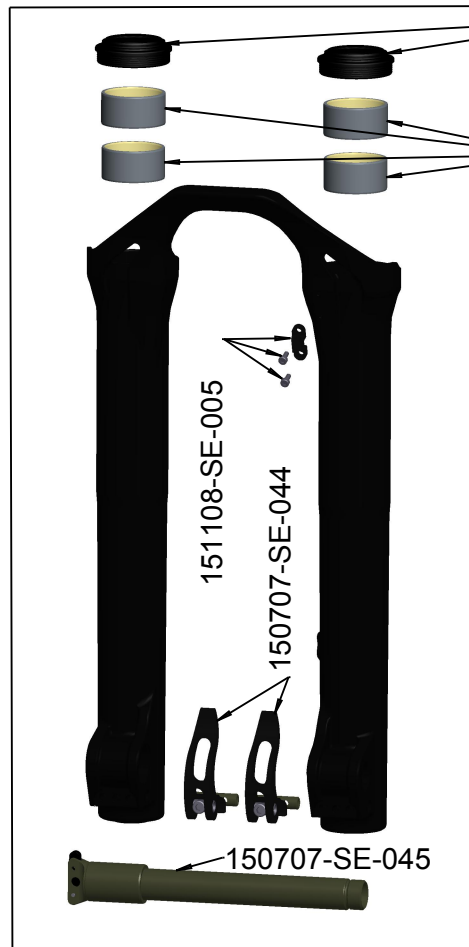
150707-SE-042



JT300004B5

CTB33B

150707-SE-003



150707-SE-004

150707SE006/B : Black
150707SE006/W : White



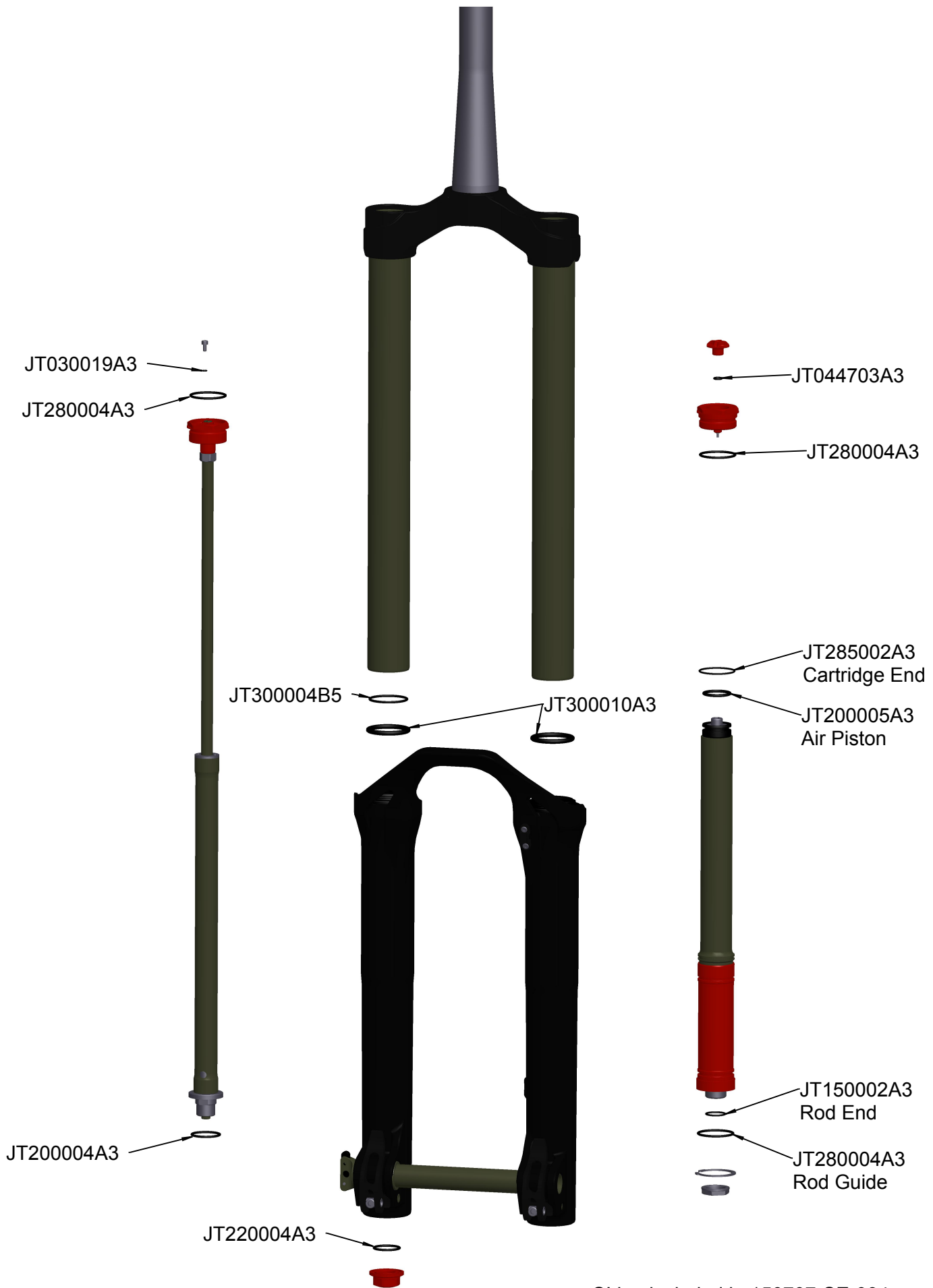
KITSTICKIDYLLESCR



150707-SE-051



150707-SE-115A



O'ring included in 150707-SE-034